

streamline™

transportation technologies inc.

Built by Transportation

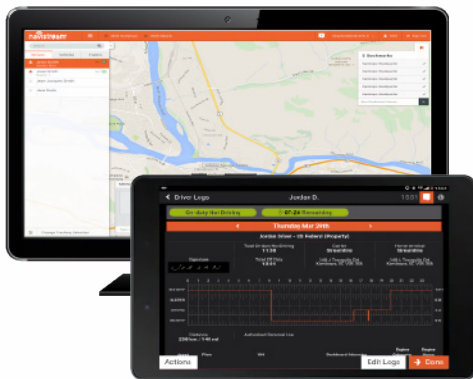


stti.com

Streamline Today

Streamline Transportation Technologies Inc. is a leading provider of fleet management solutions for the transportation industry. Streamline combines telematics with advanced wireless and vehicle automation technologies to make vehicles safer, cleaner and more productive.

navistream™



On-board Intelligence and Telematics

The Navistream On-board Intelligence platform is a cloud and tablet-based telematics SaaS.

Key Features:

- ELD Compliance
- Advanced Reporting
- Companion Apps
- GPS Tracking
- Two-way Messaging
- Vehicle Safety Inspections
- Geofencing
- Automated Workflows
- Camera Integration

navilink®

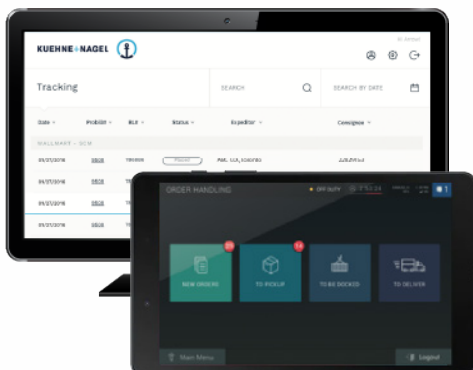


Vehicle Automation and IoT Platform

NaviLink is an advanced driver-assistance system (ADAS) that enhances vehicle performance, safety, and profitability. The proprietary technology is designed to assist drivers and is vehicle agnostic making it an ideal solution for mixed vehicle fleets.

NaviLink is Streamline's most advanced gateway platform. With its multi-network connectivity, Navilink can communicate with external sensors, systems, and IoT technologies.

degama



TMS for Trucking

Degama is Streamline's fully integrated ERP solution. Degama's Dynamic Transportation Management System (DTMS) has uniquely integrated accounting solutions, which together with the operations modules, allow management and planners to cost lanes when quoting new customers. The system also allows companies to make better decisions when planning trips and dispatching resources. Managers can retrieve in-depth reports, allowing them to better understand the business and determine when and where corrective actions should be taken.

Degama Mobile is a mobile dispatch and transaction management platform that allows users to manage fleet operations using a *bring your own device* approach.

The Streamline Advantage



User Interface

Our user interface was built with the user experience in mind.



Scalable

With Navistream, you can add assets and configure in a matter of minutes. No database or technical intervention is required as most activities can be set up in the administrative console.



Affordable

Select the package that fits your requirements and minimize your IT costs.



Easy to Maintain

There is no IT infrastructure to maintain, new versions are pushed live and no on-premise deployments are needed.



100 years of transportation expertise

Backed by 100 years of transportation expertise, our solutions were built with a transportation mindset.



Access to data API's

Download data on premise for further analysis and upload your resources.



Collaboration

Our fleet tracker enables operators, dispatchers, administrators and moving assets to collaborate.



Partner Integration

Our partnerships allow us to provide you with a complete solution for your fleets.



Active Controls

Streamline is a first mover to integrate Active Vehicle Controls technology and vehicle automation with telematics giving fleets a tool that can dramatically improve driver performance, fuel economy, and safety.



Customizable

The GPS truck tracking system has a self-serve administration and branding module that allows much faster changes without having to do any development.

BUILT BY TRANSPORTATION

**Call us for
a demo!**

Contact Us

Phone: 1-844-571-8200

sales@stti.com

stti.com



streamline™
an **ARROW** company